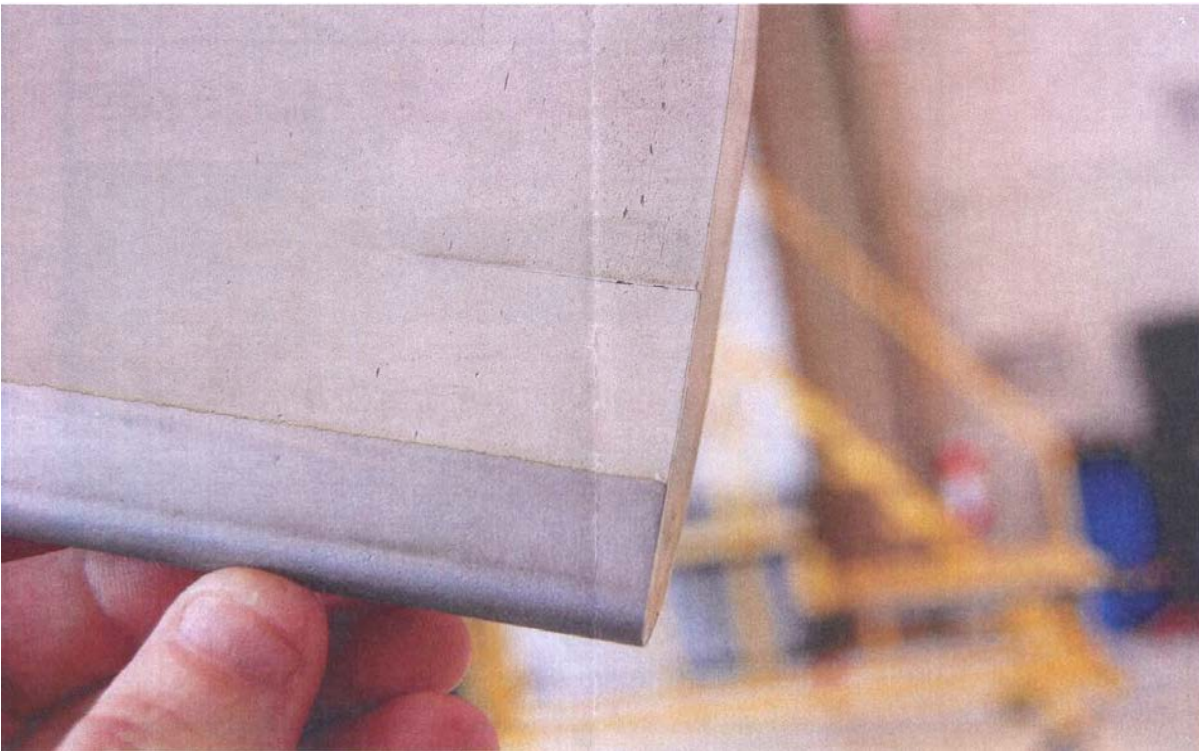
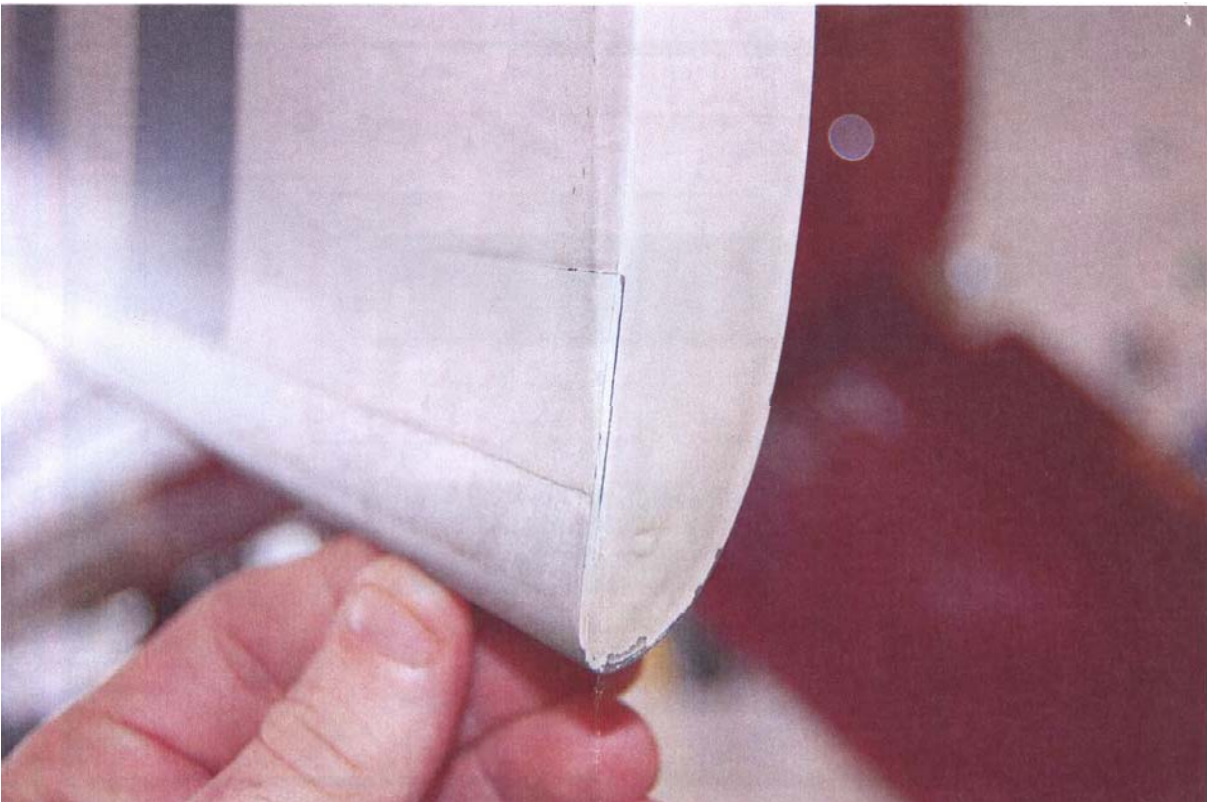


## **Bell 430, Cracked Tail Rotor Blade, ATA 6410**

A chief inspector for a repair station states, "This aircraft was flown to our facility and the operator reported '...de-bonding of the tail rotor blade leading edge—at the tip of the blade.' Upon further investigation of the blade, it was discovered that the root end of the blade had cracked and the skin was separated from the blade end. Photographs are included with this report. Information has also been submitted to Bell Helicopter Textron, product support engineering. Probable cause is unknown at this time. This aircraft is operated under Part 135 compliance." (*Tail rotor blade P/N: 222-016-001-131. Tail rotor hub and blade P/N: 222-012-701-125. Photos list as tip views 1-3, then root view 1. Quite dramatic; thanks for the photo effort—Ed.*)



**Bell 430, Cracked Tail Rotor Blade, ATA 6410**





**Bell 430, Cracked Tail Rotor Blade, ATA 6410**



Part Total Time: 1,404.6 hours

**Bell 430, Cracked Tail Rotor Blade, ATA 6410**